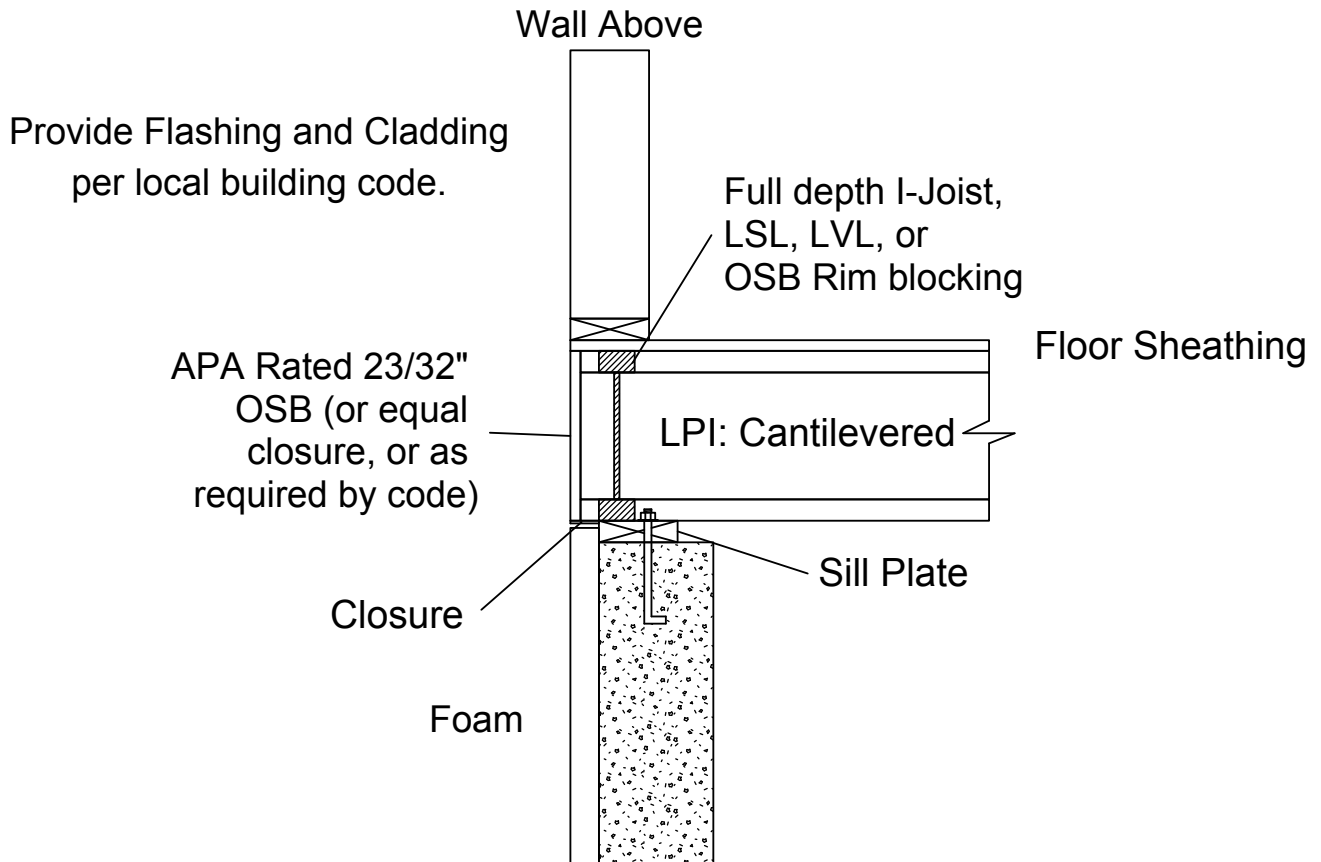


C9c

Cantilever Detail- Over Exterior Foam



Verify Cantilever Capacity. No Cantilever Reinforcing is required when the full depth blocking (LPI, LSL, LVL, or OSB) is completely: under the wall above, and above the sill plate below. Designer is responsible for verifying that the blocking is capable of transferring all loads (both vertical and lateral).

Verify Nailing and Anchor Bolt size and spacing meets local code requirements.